



Elk Valley Resources

2024 - 2025

Elk Valley Access Boundaries



A GLENORE COMPANY

Promoting safety on and off site with defined access boundaries

For your protection and ours, please observe and follow the No Unauthorized Entry, Bow Hunting Only, No Shooting and No Hunting boundaries. Mining activities can start avalanches or rockslides without warning. Maps should be used for reference only. Please follow field signage at all times.

If you see wounded game crossing the safety boundary, do not follow. Contact the site Loss Prevention Officer for further instructions.

Who we are

Elk Valley Resources (EVR) operates four steelmaking coal mines that employ over 5,000 people in the Elk Valley of British Columbia. We are committed to responsible resource development, environmental performance and building strong partnerships with communities and Indigenous Peoples.

EVR is proud to be part of the Glencore Group, a portfolio of operations around the world and a history that dates back more than 100 years in Canada.

What we do

EVR produces high quality steelmaking coal, a key transition-enabling resource that is an essential input for steel production, which is needed for constructing products like wind turbines and critical infrastructure including rail, bridges, hospitals and schools.

Sustainability

Responsible environmental performance, maintaining stringent safety standards, and building strong partnerships with Indigenous Peoples built on care and trust, underpin our approach to operating.

Careers

Among our top priorities are workplace health and safety, operational excellence and environmental responsibility. We're looking for people who are excited to grow their careers and contribute to EVR's commitment to being a responsible Canadian steelmaking coal producer.

Whatever your position on the EVR team, you're guided by leadership that believes in supporting people and nurturing talent.

Visit [evr.com/careers](https://www.evr.com/careers) to apply today!



We want your input

As backcountry users and recreationalists, your input on trails and land access located on or through EVR land is valuable. As our mine plans evolve, we want to understand the areas of interest to you and how we can help facilitate continued safe use of these areas, as we adjust our No Unauthorized Entry Boundaries.

Join us for our annual backcountry user and outdoor recreationalists meeting **December 4, 2024**.

If you have any questions or feedback about our operations in the Elk Valley, please contact us;

Phone toll-free: 1.855.806.6854

Email: feedback@evr.com

Site Information

Fording River Operations:
250.865.5016 or 250.425.4133

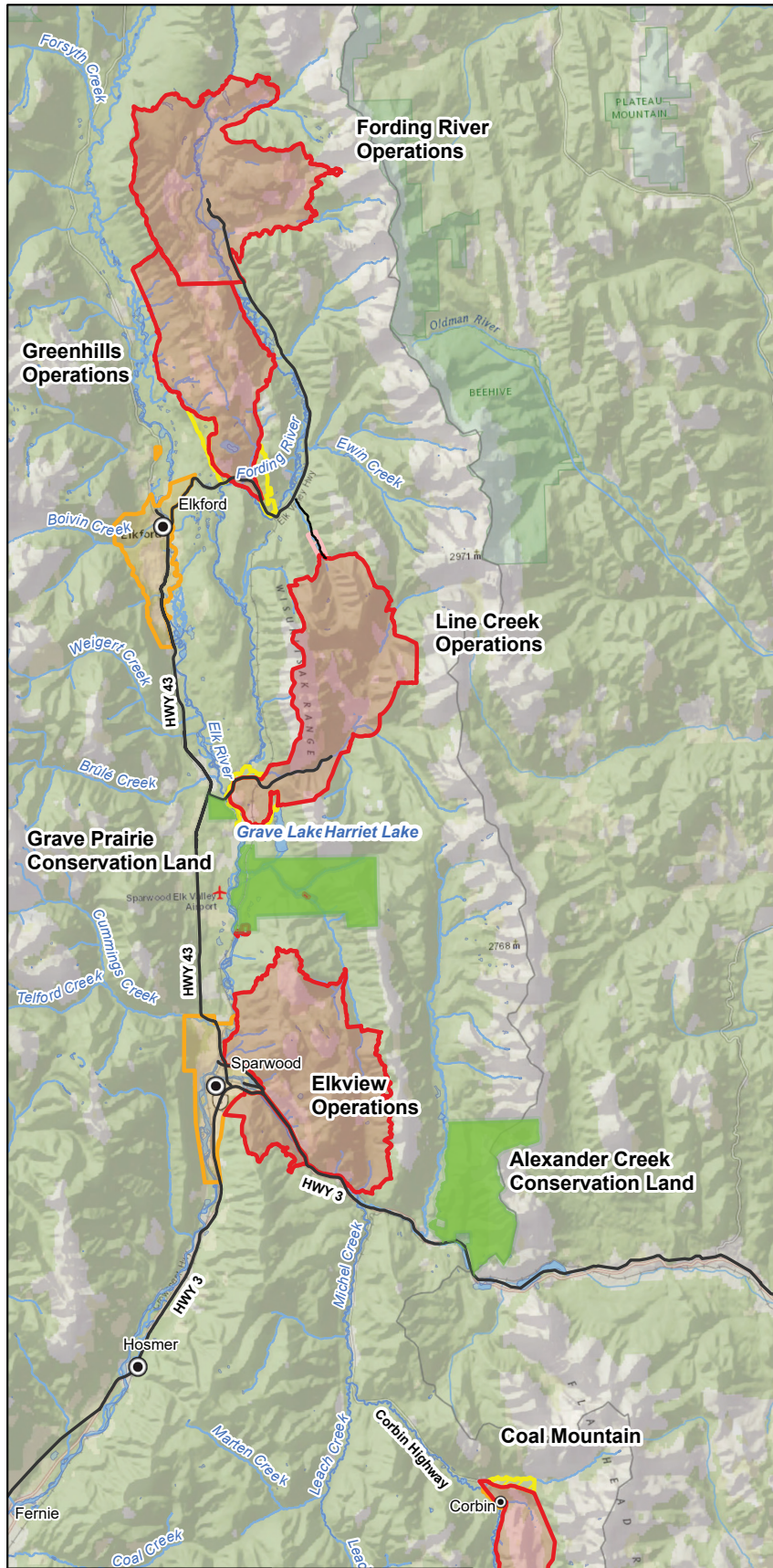
Greenhills Operations:
250.865.3098 or 250.865.3042

Line Creek Operations:
250.425.3112

Elkview Operations:
250.425.8899

Coal Mountain Training Campus:
250.425.7390

To view the EVR Access Boundary maps online, visit www.evr.com



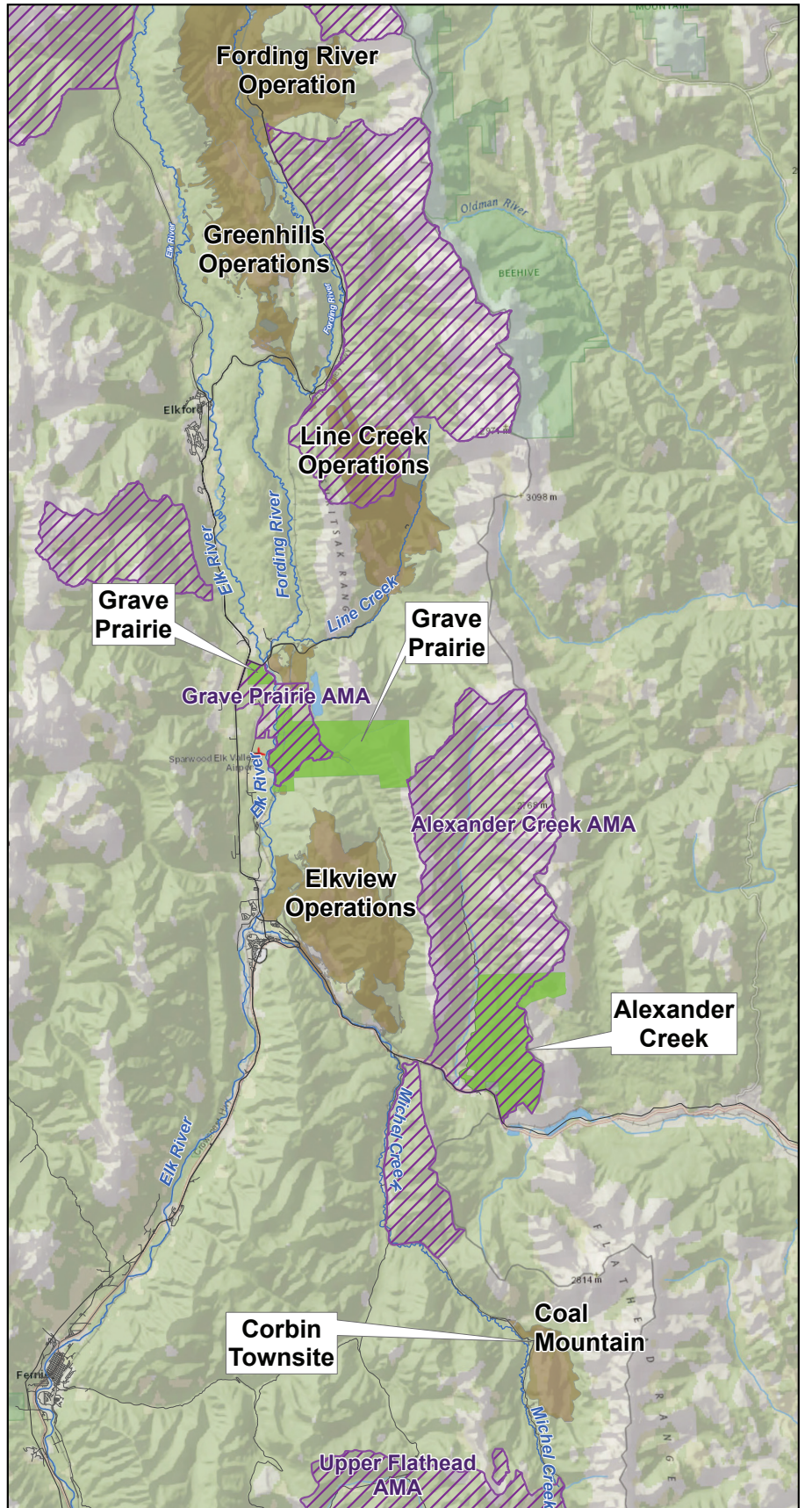
Elk Valley NUE Boundaries and Conservation Lands



A GLENORE COMPANY
 The maps and map data are provided 'as is' without any guarantee, representation, condition or warranty of any kind, either express, implied, or statutory. Elk Valley Resources assumes no liability with respect to any reliance the user places in the maps and map data, and the user assumes the entire risk as to the truth, accuracy, currency, or completeness of the information contained in the maps and map data.

Scale 1:330,000
 Date Q3/2023

- Town
- Hamlet
- Paved Road
- Controlled Access
- Lakes
- Stream
- No Unauthorized Entry, No Hunting, No Trespassing
- No Shooting, Bow Only Zone
- No Motorized Access, Bow Only Zone
- No Hunting, Access Only
- Municipal No Shooting Area
- Conservation Lands



EVR Conservation Lands



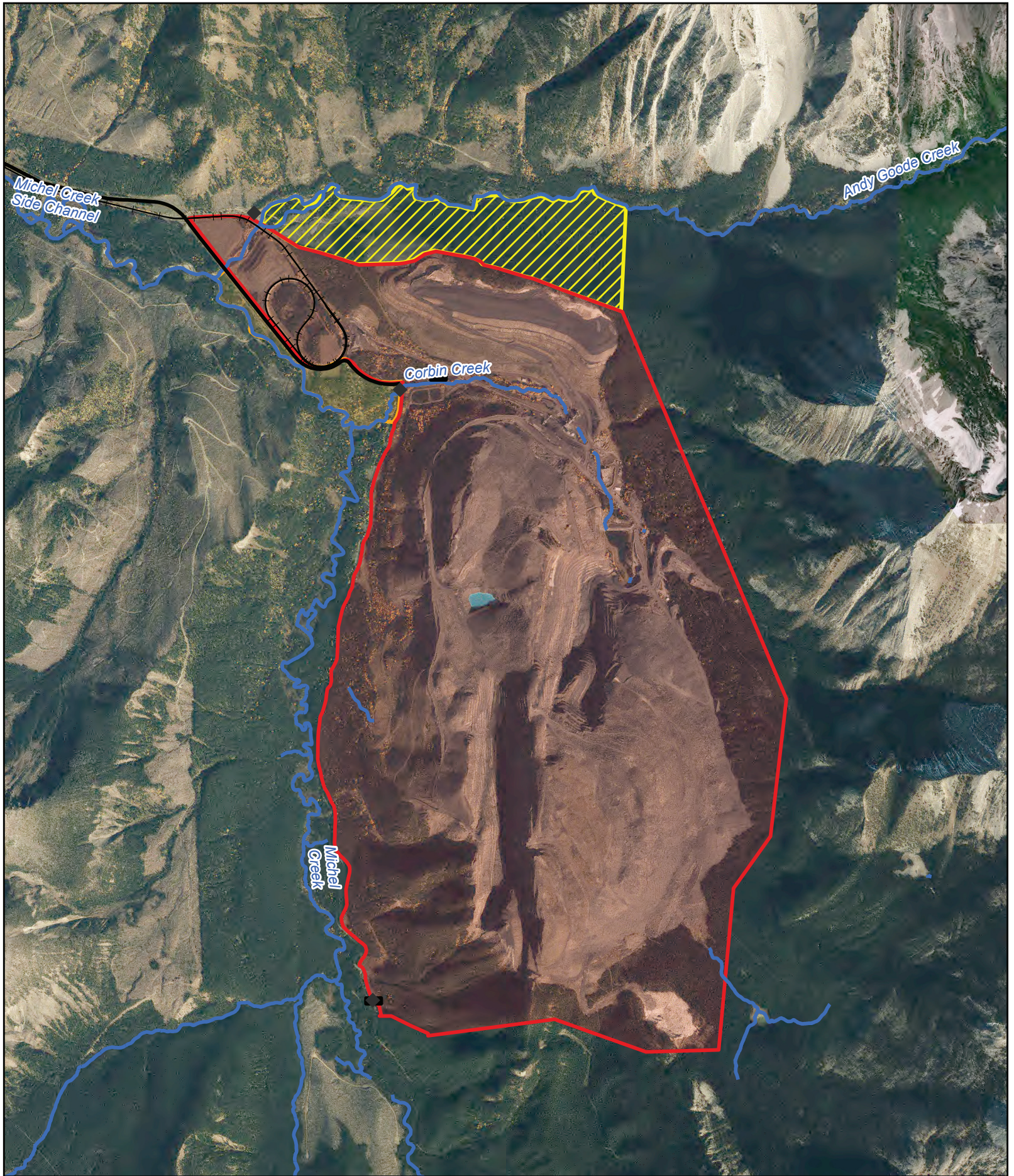
A GLENORE COMPANY
 The maps and map data are provided 'as is' without any guarantee, representation, condition or warranty of any kind, either express, implied, or statutory. Elk Valley Resources assumes no liability with respect to any reliance the user places in the maps and map data, and the user assumes the entire risk as to the truth, accuracy, currency, or completeness of the information contained in the maps and map data.


Scale 1:330,000
 Date Q3/2023

- Road
- River
- ▨ Access Management Area (AMA)
- Mine Permit Boundary
- Conservation Lands

Flathead Townsite

East Flathead AMA



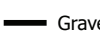

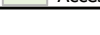

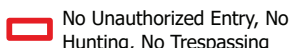
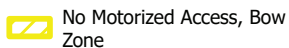
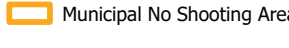



EVR 
A GLENCORE COMPANY

The maps and map data are provided 'as is' without any guarantee, representation, condition or warranty of any kind, either express, implied, or statutory. Elk Valley Resources assumes no liability with respect to any reliance the user places in the maps and map data, and the user assumes the entire risk as to the truth, accuracy, currency, or completeness of the information contained in the maps and map data.

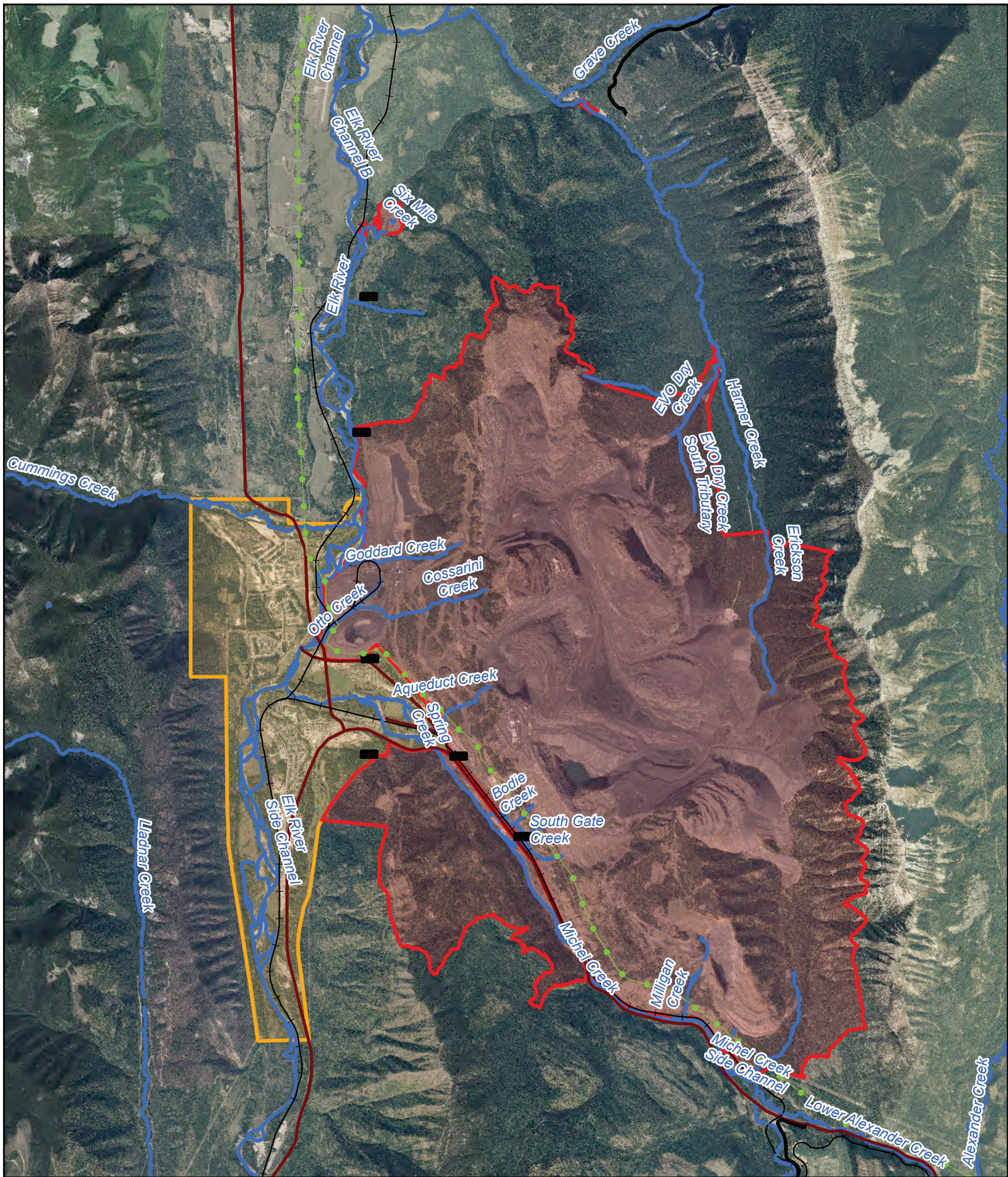


No Unauthorized Entry - CMm

-  Gate
-  Sign
-  Railway
-  Gravel
-  Major Streams
-  Access Management Area (AMA)
-  No Unauthorized Entry, No Hunting, No Trespassing
-  No Motorized Access, Bow Only Zone
-  Municipal No Shooting Area

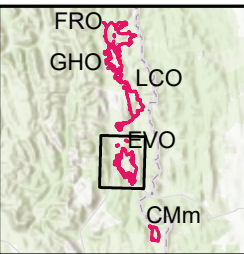
0 40 80 160
 km

DATE: 8/8/2024	MINE OPERATION Coal Mountain
Scale: 1:37,000	Spatial Reference NAD 1983 UTM Zone 11N



EVR
A GLENCORE COMPANY

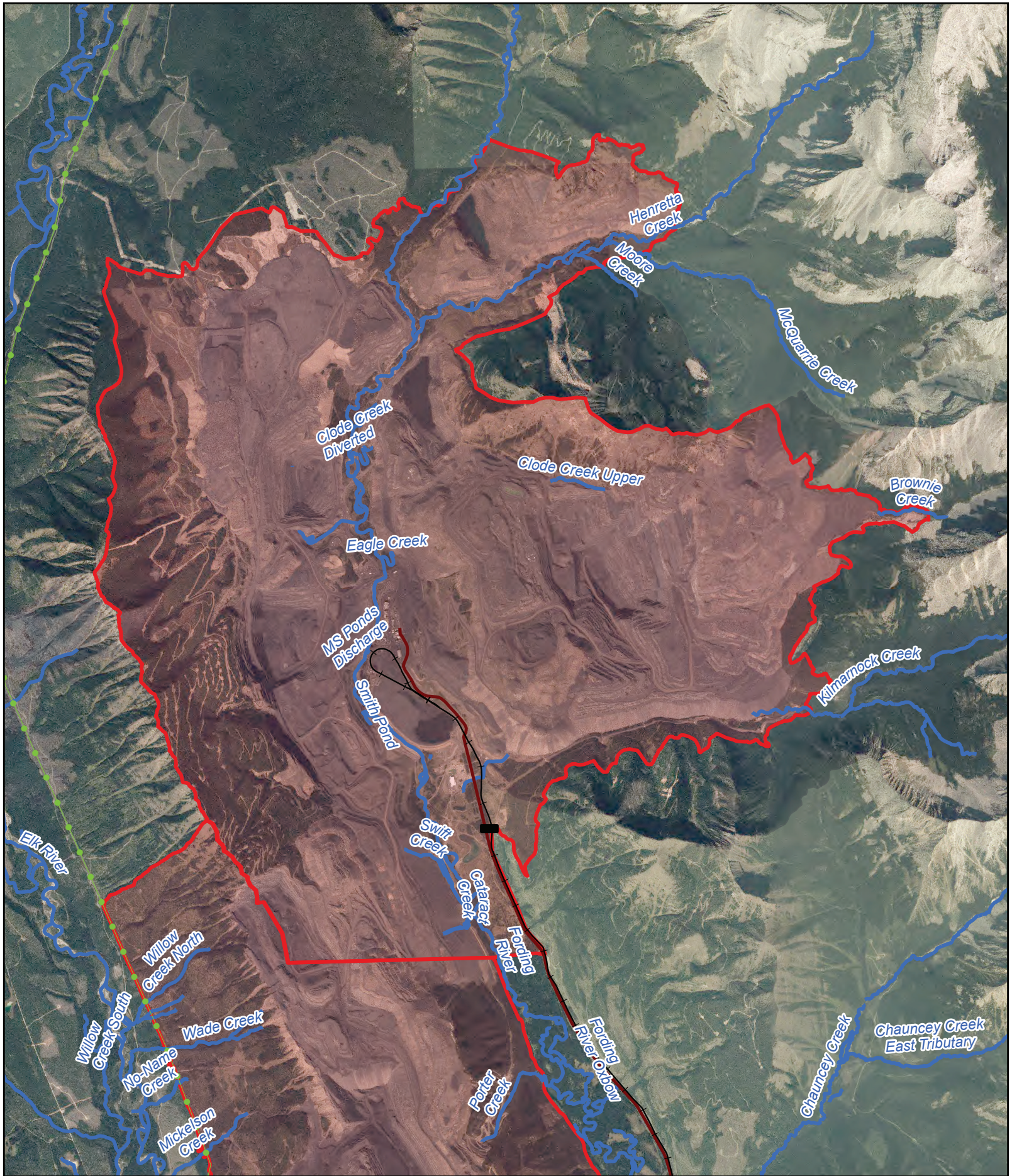
The maps and map data are provided 'as is' without any guarantee, representation, condition or warranty of any kind, either express, implied, or statutory. Elk Valley Resources assumes no liability with respect to any reliance the user places in the maps and map data, and the user assumes the entire risk as to the truth, accuracy, currency, or completeness of the information contained in the maps and map data.



No Unauthorized Entry - EVO

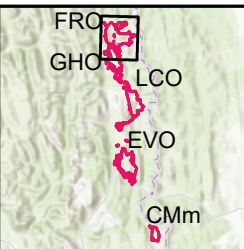
Gate	Major Streams
Railway	Access Management Area (AMA)
Power Lines	No Unauthorized Entry, No Hunting, No Trespassing
Paved Surface	Municipal No Shooting Area
Gravel	

0 40 80 160 km	
DATE: 8/8/2024	MINE OPERATION Elkview
Scale: 1:90,000	Spatial Reference NAD 1983 UTM Zone 11N



EVR
A GLENORE COMPANY

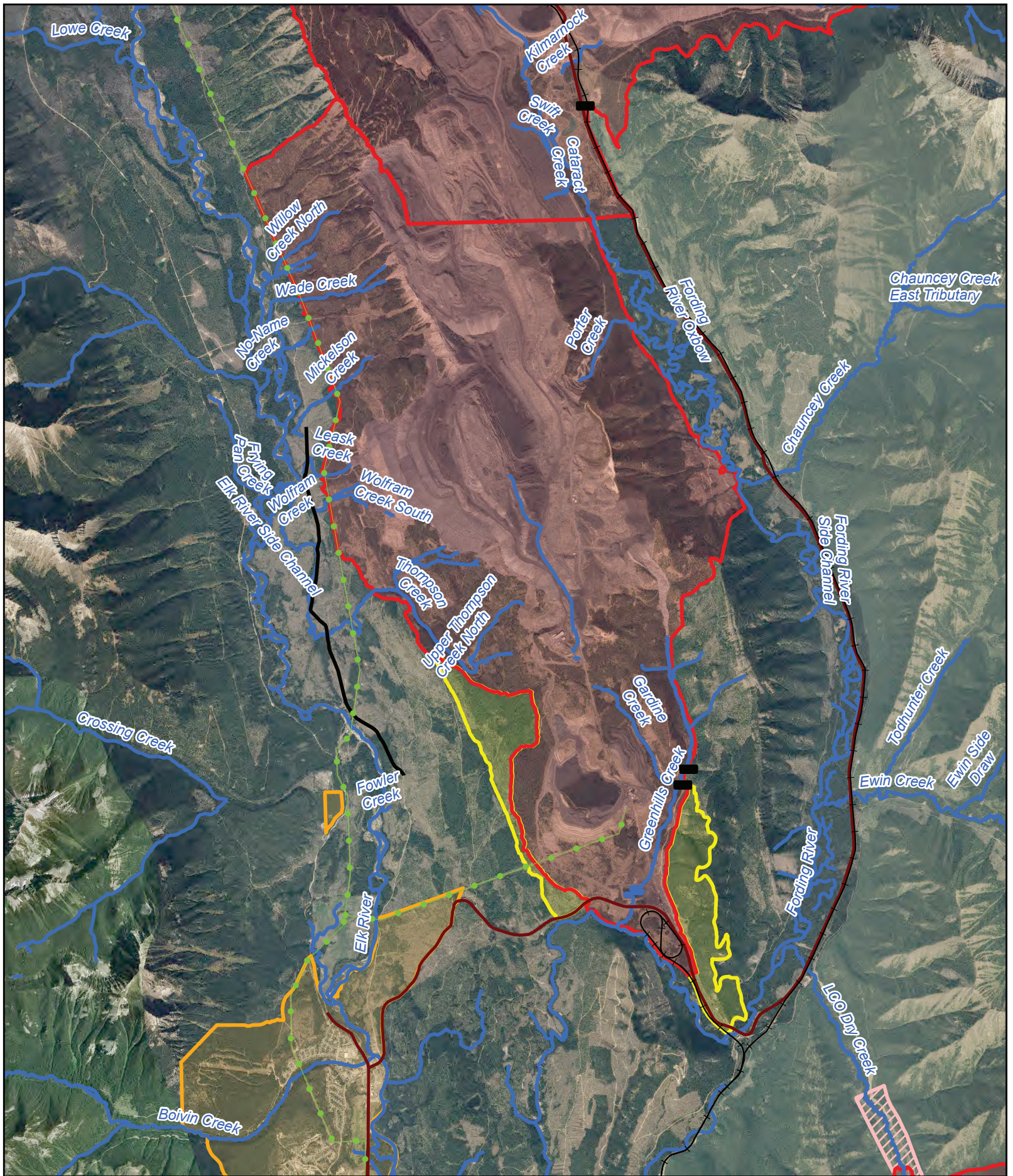
The maps and map data are provided 'as is' without any guarantee, representation, condition or warranty of any kind, either express, implied, or statutory. Elk Valley Resources assumes no liability with respect to any reliance the user places in the maps and map data, and the user assumes the entire risk as to the truth, accuracy, currency, or completeness of the information contained in the maps and map data.



No Unauthorized Entry - FRO

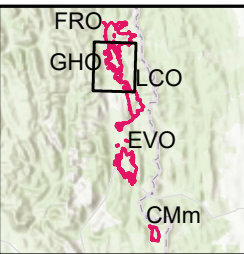
- Gate
- Railway
- Power Lines
- Paved Surface
- Major Streams
- Access Management Area (AMA)
- No Unauthorized Entry, No Hunting, No Trespassing

0 40 80 160 km	
DATE: 8/8/2024	MINE OPERATION Fording River
Scale: 1:74,000	Spatial Reference NAD 1983 UTM Zone 11N



EVR
A GLENORE COMPANY

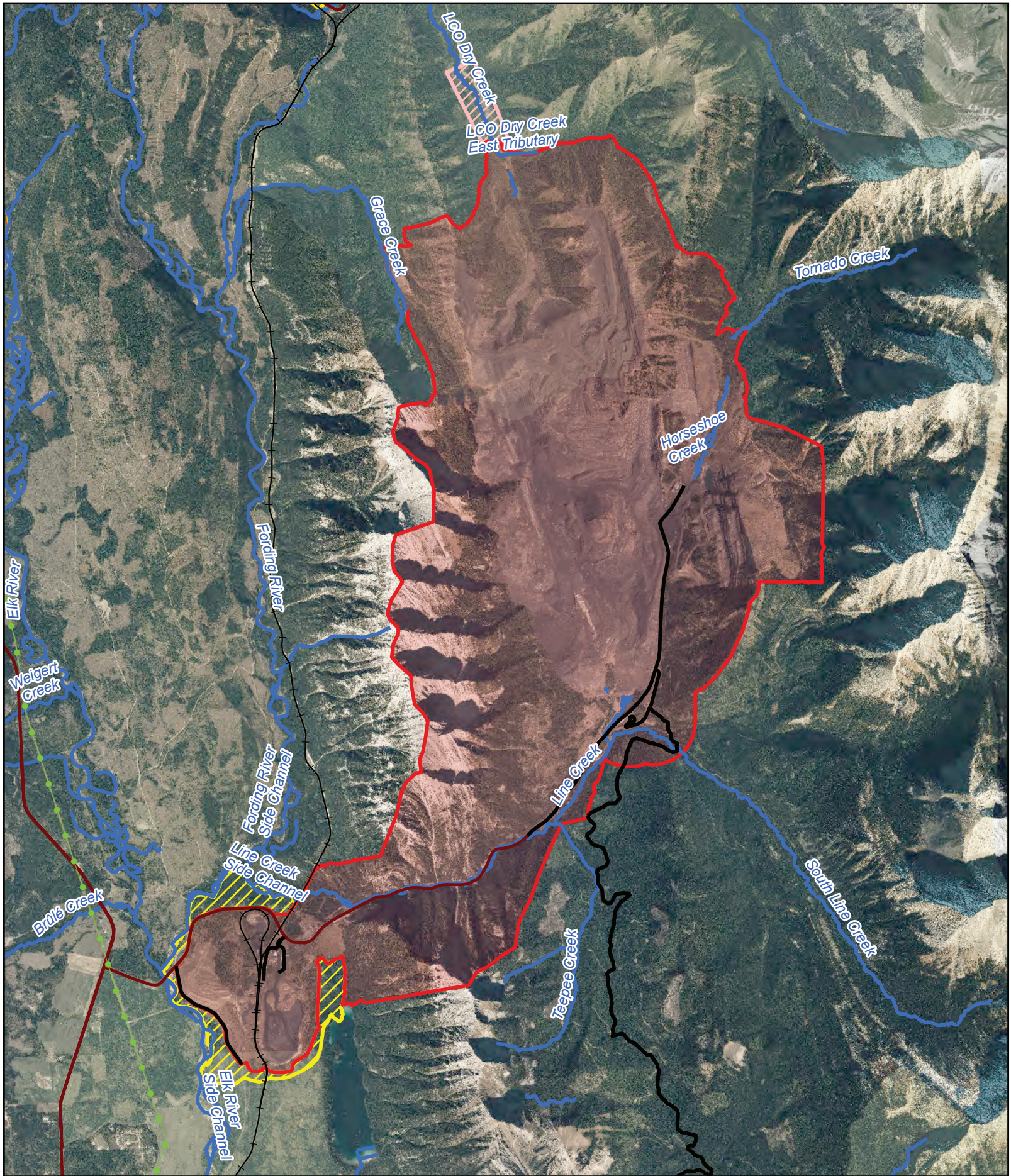
The maps and map data are provided 'as is' without any guarantee, representation, condition or warranty of any kind, either express, implied, or statutory. Elk Valley Resources assumes no liability with respect to any reliance the user places in the maps and map data, and the user assumes the entire risk as to the truth, accuracy, currency, or completeness of the information contained in the maps and map data.



No Unauthorized Entry - GHO

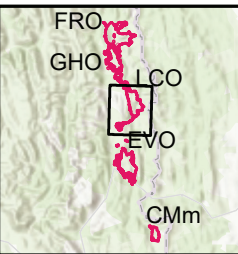
Gate	Access Management Area (AMA)
Railway	No Unauthorized Entry, No Hunting, No Trespassing
Power Lines	No Shooting, Bow Only Zone
Paved Surface	No Hunting, Access Only
Gravel	Municipal No Shooting Area
Major Streams	

0 40 80 160 km	
DATE: 8/8/2024	MINE OPERATION Greenhills
Scale: 1:84,000	Spatial Reference NAD 1983 UTM Zone 11N



EVR
A GLENCORE COMPANY

The maps and map data are provided 'as is' without any guarantee, representation, condition or warranty of any kind, either express, implied, or statutory. Elk Valley Resources assumes no liability with respect to any reliance the user places in the maps and map data, and the user assumes the entire risk as to the truth, accuracy, currency, or completeness of the information contained in the maps and map data.



No Unauthorized Entry - LCO

Railway	No Unauthorized Entry, No Hunting, No Trespassing
Power Lines	No Shooting, Bow Only Zone
Paved Surface	No Motorized Access, Bow Only Zone
Gravel	No Hunting, Access Only
Major Streams	Municipal No Shooting Area
Access Management Area (AMA)	

0 40 80 160 km	
DATE: 8/8/2024	MINE OPERATION Line Creek
Scale: 1:85,000	Spatial Reference NAD 1983 UTM Zone 11N